

ENGLISH FOR SMART LEARNING

For learners 7 to 8 years
Classes 2 and 3



- ▶ Tests cognitive skills and creative thinking abilities
- ▶ Helps build a strong foundation for academic abilities



Learning Smart. And Building a Strong Foundation for Academic Abilities

Why GETS Elementary?

As the world steps into the 4th Industrial Age, we envision a volatile, uncertain, complex and ambiguous (VUCA) world undergoing continuous disruptive changes driven by digitalisation.

Today, it is the responsibility of educators to prepare students to embrace these challenges and thrive in the midst of unprecedented technological advancements. It is in this context that **GETS Elementary** has been designed. The underlying principle of this English Language assessment is to foster the acquisition of language needed for subject learning in academic settings. The assessment also aims at enhancing skills required for language-use in the real world.

Developed by Experts for Students, Teachers and Parents

GETS Elementary has been developed by specialists and subject-matter experts with over two decades of experience in the education industry. The test reports – which supplement regular subject-specific progress reports – provide a detailed picture of a student's abilities, equipping teachers with information regarding their students' strengths and weaknesses. Assessment results guide teachers towards adapting teaching methodologies to suit the needs of their classes and also to plan personalised attention and intervention.

Parents are also kept informed of their child's achievement in each component skill enabling them to plan learning support for their wards.



Testing cognitive skills and creative thinking

The test is targeted at students of Classes 2 and 3 to measure their skills and abilities in the following areas:

Aural Comprehension

Aural Comprehension works in conjunction with phonetic instruction and entails speech perception (sound and word recognition) and processing of information to be held in short-term memory. It is an active skill required for effective language learning.

Composition

Composition refers to the ability to write a story by using information provided in the form of input pictures and oral instructions. It assesses clarity of ideas conveyed whilst encouraging creative cognition.

Logical Reasoning

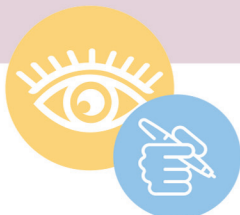
Logical Reasoning addresses the thinking ability of students and helps build fundamental skills such as acquisition of information, forming associations, comparing, categorising and sequencing the information and focusing attention and spatial awareness – paramount in the study of academic disciplines.

Verbal Reasoning

Verbal Reasoning assesses the ability of students to understand and use concepts of words and to recognise subject vocabulary. This part enables the acquisition of new vocabulary, the skills of checking meaning and consolidation of the meaning.

Visual Understanding

Visual Understanding checks the ability of students to understand and follow a variety of visuals that they encounter in the world around them and also those used in the study of academic school subjects.



Assesment Stages

The assessment is divided into two stages.

Stage 1: Students are assessed basis their Aural Comprehension and Writing, also known as Composition, which are an integral part of experiential learning in the school curricula.

Stage 2: Students grapple with language-use for the real world as they apply their minds to solving questions, interpreting visuals and completing crosswords and puzzles for word building.



Test Components

ASSESSMENT	MODULES	TIME	MARKS
Creative Skills	Aural Comprehension + Composition	20 min	20
Academic Skills	Visual Understanding + Verbal Reasoning + Logical Reasoning	30 min	30

Question Types – Stage 1

- Listening and matching rhyming words
- Listening & colouring the suitable object
- Drawing Dictation
- Composing a story using input pictures and oral instructions

Question Types – Stage 2

- Interpreting visuals and choosing YES / NO
- Completing a crossword
- Completing a word search puzzle
- Building words by rearranging letters
- Unjumbling words to fill in the gaps
- Sequencing images or processes
- Circling or underlining the odd one out
- Multiple-choice questions



Highlights

- International certification
- Low cost
- On-demand test dates
- Quick results release
- First of its kind assessment
- Integrally linked to ongoing classroom teaching
- Attain academic brilliance

Download



GETS Delivery Partner



Planet EDU

304 (3rd Floor), Park Centra, Sector – 30
Gurugram – 122001, Haryana, India
T: +91.1241468 4800

Lakshya Babbar

M: +919310028406

E: BD@theplanetedu.com